

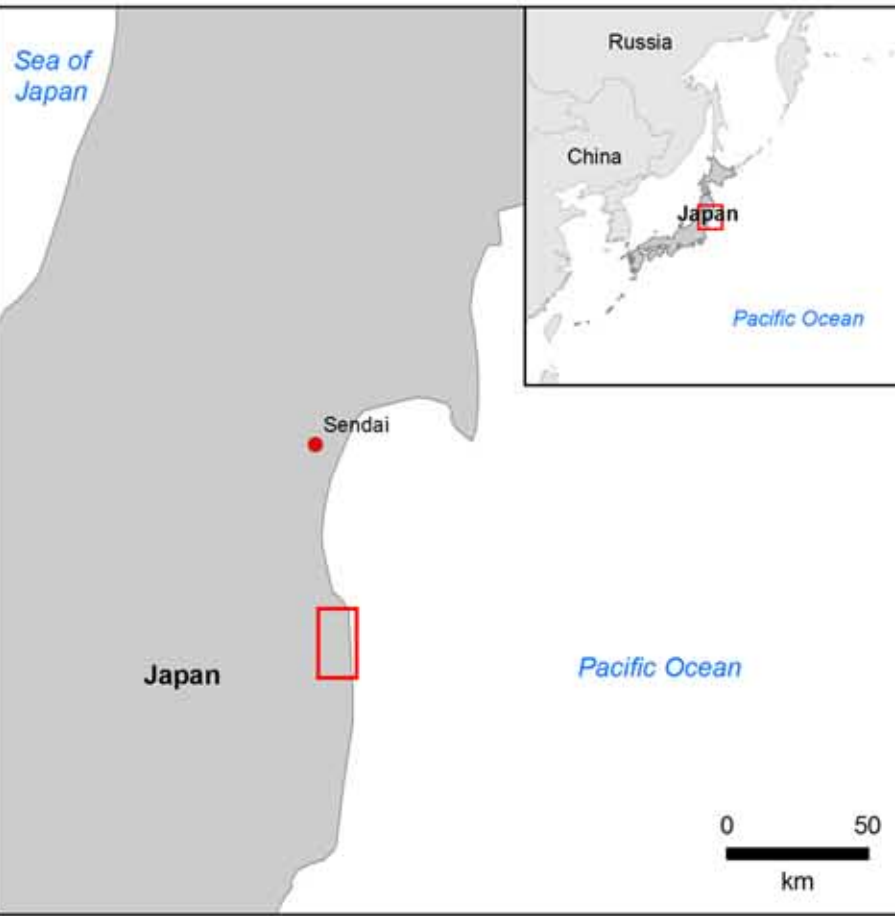
140°55'48"E 495000 140°59'48"E 500000

JAPAN - Minamisoma
Earthquake/Tsunami

Observed inundation extent as of
March 12, 2011

Scale: 1:30,000

Location Diagrams



Legend

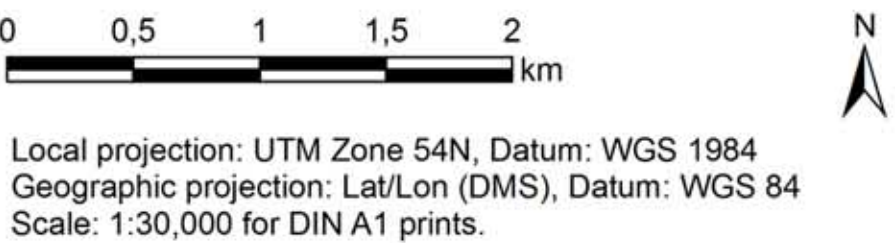


Interpretation

On March 11, 2011 an earthquake with a magnitude of 8.8 hits north-east Japan followed by a series of powerful aftershocks of magnitudes up to 7.5. The epicenter was located 250 miles (400km) from the capital Tokyo at a depth of 20 miles (32km). Numerous roads and towns have been inundated and destroyed by a tsunami triggered by the earthquake. Thousands of people lost their lives.

The map shows the eastern coastline of Honshu around the town of Minamisoma. The inundation extent was derived by semi-automatic image analysis of TerraSAR-X imagery (2.5 m spatial resolution) acquired on March 12, 2011. Orthorectified and radiometrically enhanced RapidEye post-disaster imagery (6.5 m spatial resolution), acquired on March 12, 2011, serves as background.

Cartographic Information



Data Sources

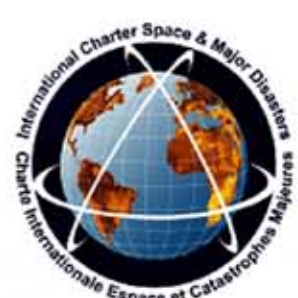
RapidEye (6.5 m)	© RapidEye AG 2011
TerraSAR-X (2.5 m)	© German Aerospace Center (DLR) 2011, Commercial exploitation rights: Infoterra GmbH
Vector data	
Settlements	© DLR 2011 (based on Google Earth 2011)
Inundation assessment	© DLR 2011

Framework

The products elaborated for this Rapid Mapping Activity are realised to the best of our ability, within a very short time frame, optimising the material available.
All geographic information has limitations due to the scale, resolution, date and interpretation of the original source materials. No liability concerning the content or the use thereof is assumed by the producer.

Map produced March 15, 2011 by ZKI
© DLR 2011

zki@dlr.de
<http://www.zki.dlr.de>



140°55'48"E 495000 140°59'48"E 500000