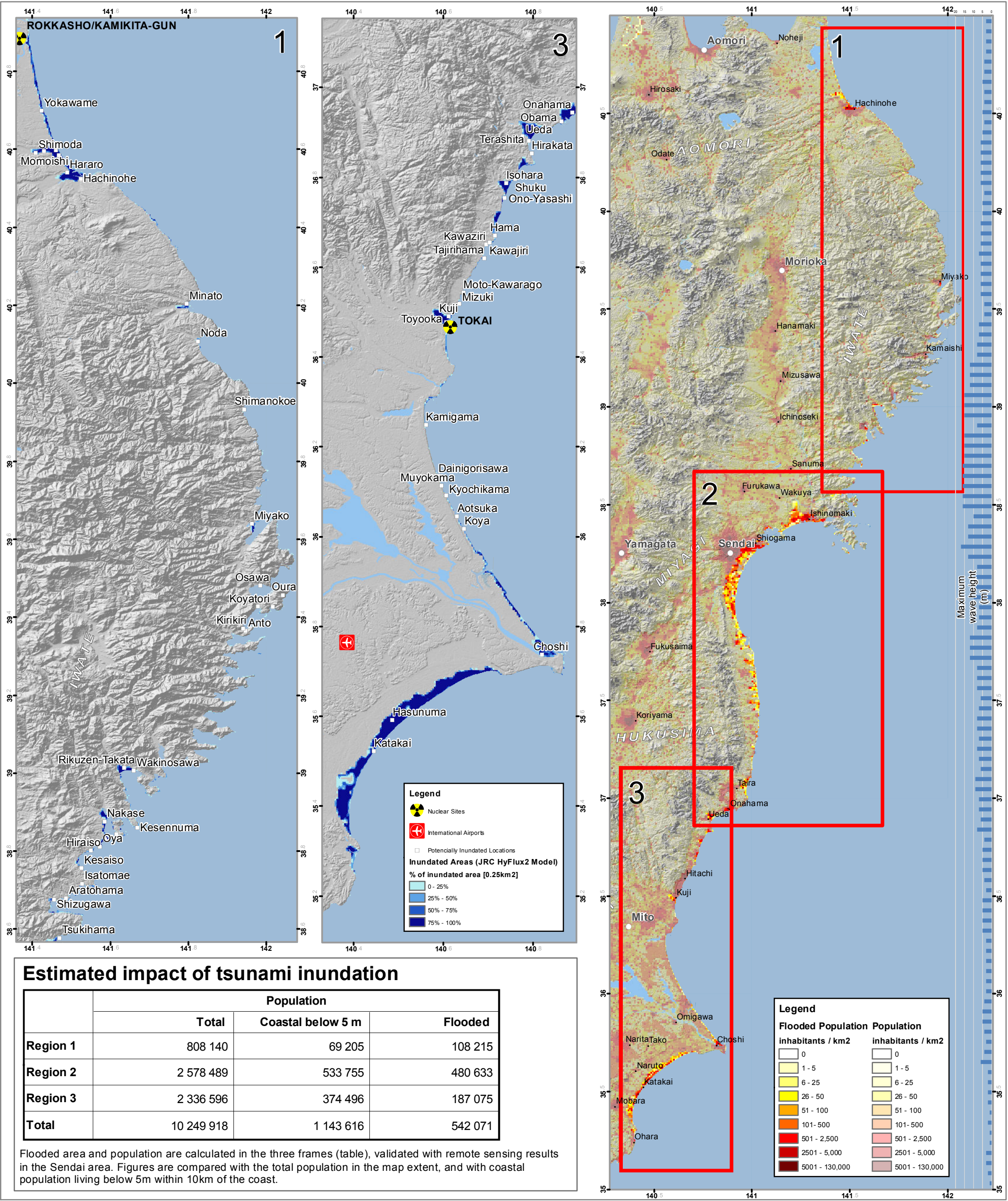


# Impact Analysis Map - Inundated areas [Regions 1,3]

## Tsunami in Japan on 11/03/2011 05:46:24 AM UTC




### Map Information

This map aims at identifying the population affected by the tsunami based on the JRC SWAN propagation and HyFlux2 inundation models in the Sendai area (region 2) and the areas north (frame1) and south (region 3) of Sendai. The HyFlux2 model (blue) is available for the whole East coast of Honshu (regions 1, 2 and 3); satellite based information is currently only available for the Sendai area (region 2), where HyFlux2 results correspond well. The bars on the right shows the maximum wave height at the coast calculated by HyFlux2.

**Spatial Reference:** GCS-WGS 1984  
**Map Scale (A3):** 1:2,000,000 - 1:1,000,000  
**Time Reference:** 11/03/2011  
**Map Production:** 16/03/2011  
**Version:** 1.0  
**Map ID:** 2069

**Inundation Data:** JRC HyFlux2  
**Population Data:** LandScan 2008  
**Background Data:** ESRI, World Map - © 2008 Europa Technologies Ltd.

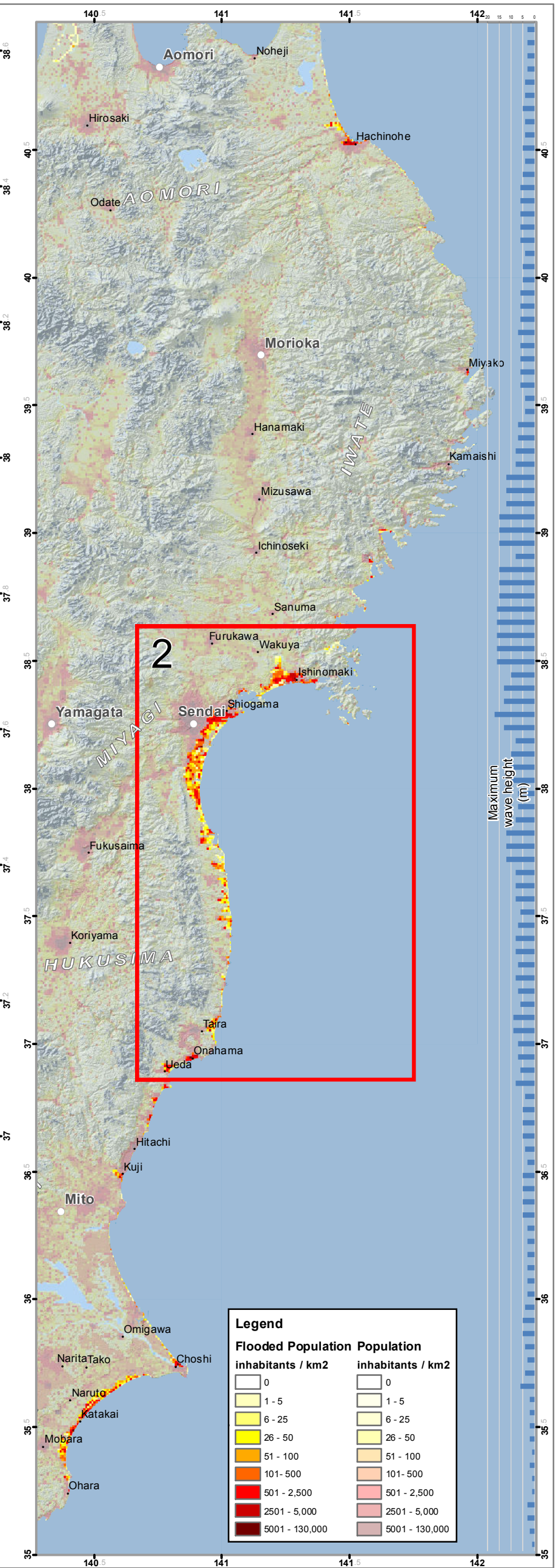
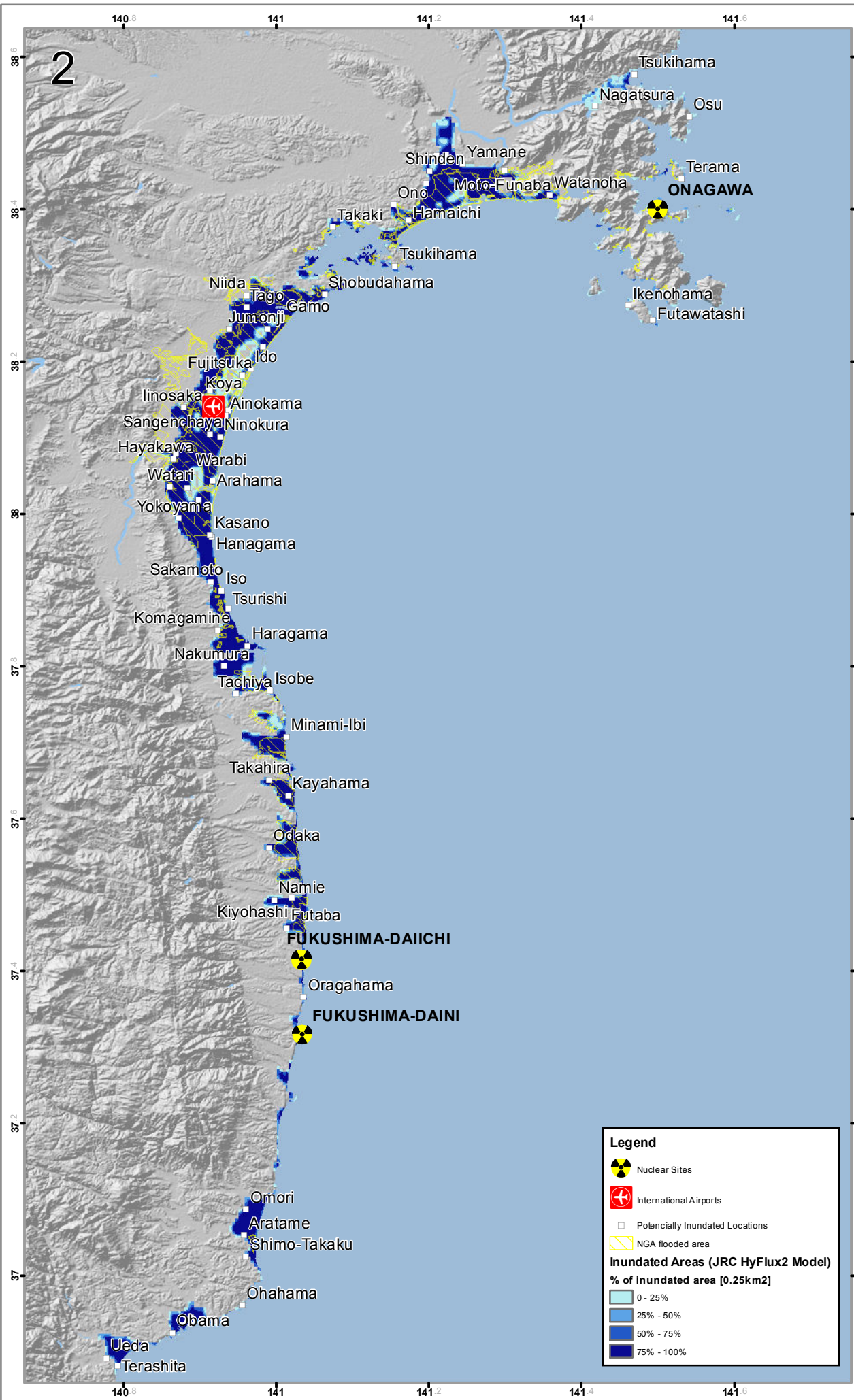


  
**JRC GDACS**  
EUROPEAN COMMISSION  
[www.gdacs.org](http://www.gdacs.org)  
Contact GDACS: Tom De Groeve  
(tom.de-groev@jrc.ec.europa.eu)

Disclaimer: this map does not reflect the official opinion of the European Communities or other European Community institutions. Neither the European Commission nor any person or company acting on the behalf of the European Commission is responsible for the use that may be made of the information contained in this map.



# Impact Analysis Map - Inundated areas [Region 2] Tsunami in Japan on 11/03/2011 05:46:24 AM UTC



## Estimated impact of tsunami inundation

	Population		
	Total	Coastal below 5 m	Flooded
Region 1	808 140	69 205	108 215
Region 2	2 578 489	533 755	480 633
Region 3	2 336 596	374 496	187 075
Total	10 249 918	1 143 616	542 071

Flooded area and population are calculated in the three frames (table), validated with remote sensing results in the Sendai area. Figures are compared with the total population in the map extent, and with coastal population living below 5m within 10km of the coast.


### Map Information

This map aims at identifying the population affected by the tsunami based on the JRC SWAN propagation and HyFlux2 inundation models in the Sendai area (region 2) and the areas north (frame1) and south (region 3) of Sendai. The HyFlux2 model (blue) is available for the whole East coast of Honshu (regions 1, 2 and 3); satellite based information is currently only available for the Sendai area (region 2), where HyFlux2 results correspond well. The bars on the right shows the maximum wave height at the coast calculated by HyFlux2.

**Spatial Reference:** GCS-WGS 1984  
**Map Scale (A3):** 1:2,000,000 - 1:750,000  
**Time Reference:** 11/03/2011  
**Map Production:** 16/03/2011  
**Version:** 1.0  
**Map ID:** 2070

**Inundation Data:** JRC HyFlux2, NGA  
**Population Data:** LandScan 2008  
**Background Data:** ESRI, World Map - © 2008 Europa Technologies Ltd.



  
**JRC GDACS**  
EUROPEAN COMMISSION  
[www.gdacs.org](http://www.gdacs.org)  
Contact GDACS: Tom De Groeve  
(tom.de-groove@jrc.ec.europa.eu)

Disclaimer: this map does not reflect the official opinion of the European Communities or other European Community institutions. Neither the European Commission nor any person or company acting on the behalf of the European Commission is responsible for the use that may be made of the information contained in this map.