

TSUNAMI-RELATED STANDING WATER BODIES,
SENDAI, MIYAGI PREFECTURE, JAPAN

Tsunami Analysis with RS2 Acquired on 12 March 2011 & Pre-Crisis Data on 26 March 2006

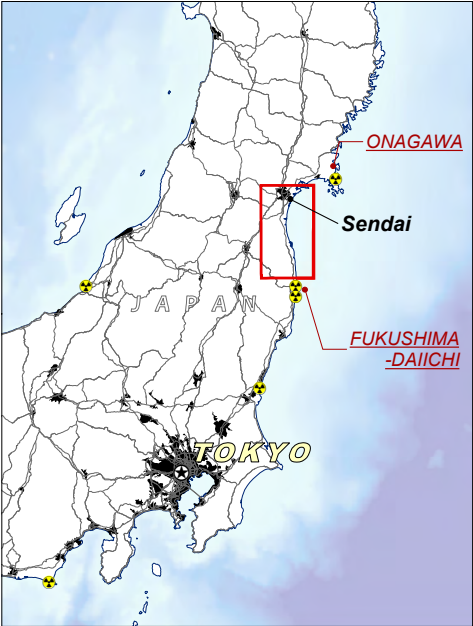
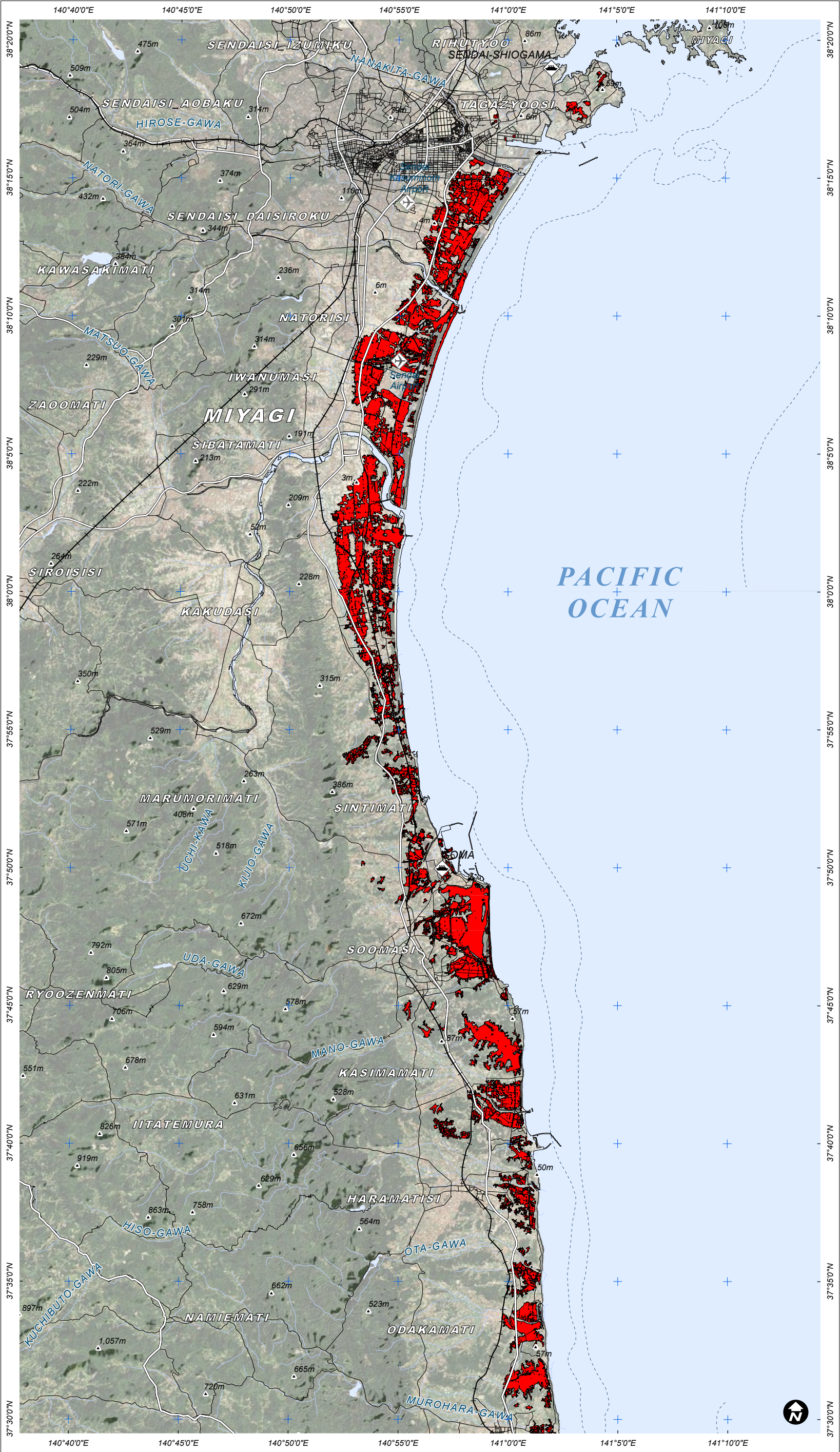
Disaster coverage by the
International Charter 'Space and
Major Disasters'. For more
information on the Charter, which
is about assisting the disaster
relief organizations with multi-
satellite data and information, visit
www.disasterscharter.org



Production Date:
17/03/2011

Version 1.0

Glide Number:
EQ-2011-000028-JPN



This map illustrates satellite-detected standing bodies of water remaining after the tsunami event over the city of Sendai and affected areas south in Miyagi Prefecture. Flood waters were identified through an analysis of Radarsat-2 satellite data recorded 12 March 2011 with a medium degree of confidence. This is a preliminary analysis & has not yet been validated in the field. It is possible that tsunami-related water bodies areas have been underestimated in areas with high debris levels. Please send ground feedback to UNITAR / UNOSAT.

Map Legend

Site Locations

- Nuclear Plant
- Airport
- Port Facility
- Protected Site

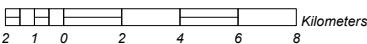
Functional Road Class

- Highway / Primary
- Secondary / local

Tsunami Water Class

- Tsunami-related standing water bodies
- Pre-crisis Water

Map Scale for A3: 1:260,000



Crisis Satellite Data(1): Radarsat-2 (HH)
Resolution: 12m
Imagery Date: 12 March 2011
Pre-crisis Satellite Data(1): Radarsat-1 (HH)
Resolution: 25m
Imagery Date: 26 March 2006
Copyright: Radarsat-2 © MDA 2010
Source: Canadian Space Agency
Nuclear Data: UNEP
Road Data: OSM
Elevation Heights: NGA
Protected Sites: WDPA 2010
Other Data: USGS, NGA
Background Imagery: Bing Maps
Source: (c) 2010 Microsoft
Analysis: UNITAR / UNOSAT
Production: UNITAR / UNOSAT
Projection: UTM Tokyo Zone 54 North
Datum: WGS-84
Produced using ArcGIS v10.0

The depiction and use of boundaries, geographic names and related data shown here are not warranted to be error-free nor do they imply official endorsement or acceptance by the United Nations. UNOSAT is a program of the United Nations Institute for Training and Research (UNITAR), providing satellite imagery and related geographic information, research and analysis to UN humanitarian & development agencies & their implementing partners.



UNOSAT

Contact Information: unosat@unitar.org
24/7 Hotline: +41 76 487 4998
www.unitar.org/unosat